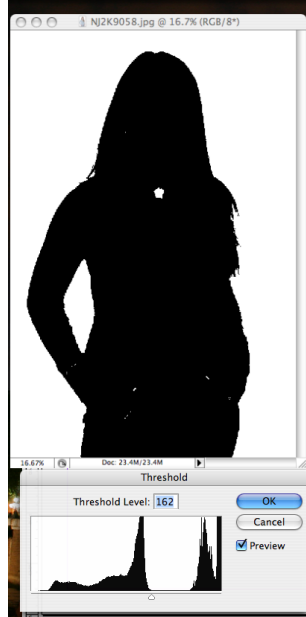


## THRESHOLD METHOD FOR CUTTING OUT BACKGROUNDS

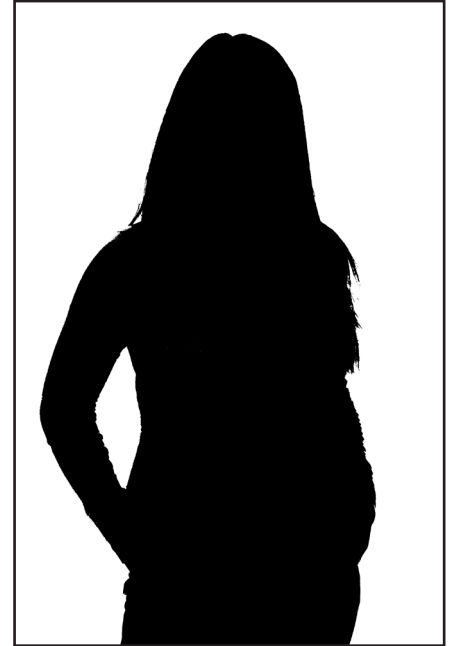
The original image (4.5MB) was taken in the classroom/studio. While not perfectly white in this case (we have improved on this throughout the year), the high contrast between the person and the white paper background allows for some very detailed cutouts.



FIRST, don't destroy your original. Duplicate the image (Image>Duplicate). Working with the duplicate, use the Threshold adjustment to gain the maximum amount of hair detail. You may have to "paint" in some of the lighter details in the body - eyes, necklace, etc.



Copy this black and white mask. Switch back to the original image you are cutting out, go to the Channels Palette. Add a new Channel and paste the mask into this Alpha 1 Channel.



Place the image in InDesign. Go to Object>Clipping Path and choose Alpha Channel and Alpha 1. The detail in the wisps of hair on her left shoulder varies greatly with the amount of threshold chosen. In this case, the image on the right is a Photoshop Path. At some point while using the Threshold method, you have to choose the best amount. At some higher threshold amounts, the amount of detail in the resulting Alpha Channel is decreased.

*Color has been added to the background of these cutouts for demonstration purposes.*

This file is available at <http://www.ilhsimages.com/cutouts.pdf>

This is the result using the Vertus Fluid Mask (\$199) Photoshop plugin. Image was saved as a .psd file with a transparent background, which does not increase the InDesign file size, but does not allow text wrapping.

